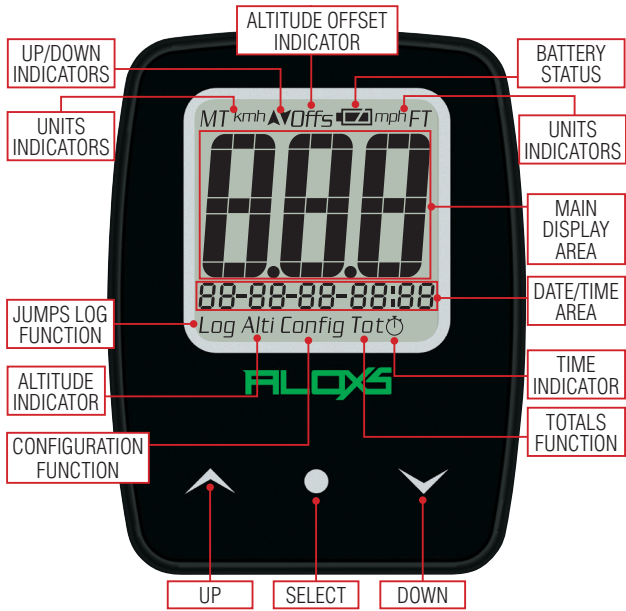


ALOXG



PARASPORT
S K Y D I V I N G



INTRODUCTION

The **AloXs Compact Altimeter** is an advanced visual digital altimeter. It is designed to effectively help to improve safety and easily keep track of skydiving activity. It can be used like a regular altimeter, but offers advanced functions because of its microprocessor heart. The easily readable display can be configured to show information clearly, and automatically changes the information displayed according to the current situation. Despite the advanced functions offered, the **AloXs** is easy to be used with little reference to the manual. We're sure you will enjoy all the features of the **AloXs**, and we invite you to read the information contained in this manual.

BUTTONS

Three buttons control the **AloXs** functions. Throughout the different functions the SELECT button normally selects or confirms, while the UP and DOWN buttons change values, program or reset functions. Buttons can have different actions if clicked (normal push and release), held down (hold depressed until the unit acknowledges), or double clicked (clicked twice in a short time).

ICONS

Icons may appear on the **AloXs** display to provide extra information. These icons won't appear while in freefall to keep the display clear to show only altitude or speed. The battery status indicator, displaying the current battery level, will be shown in main functions, but not in flight. When the battery needs to be replaced, the low battery indicator will constantly blink on the display.

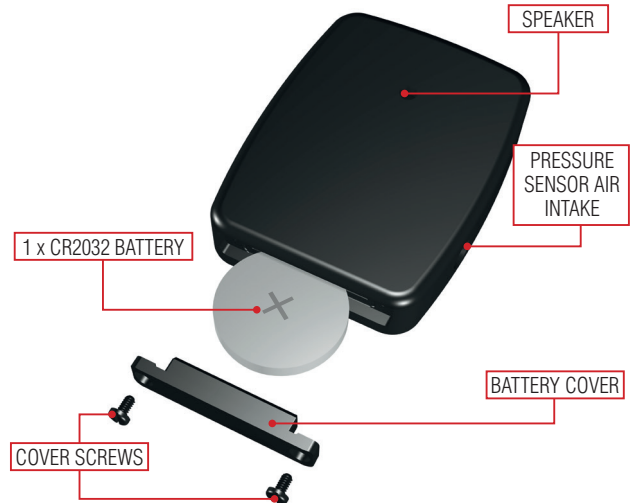
INSTALLING THE BATTERY

A new **AloXs** is shipped with the battery installed, but it is inactive. To activate the unit, just click a button and normal operation will start. This will happen every time the battery is replaced. You can recognize that the unit is inactive when the screen is blank, as in normal operation the LCD shows at least date and time.

Expected battery life is about 2 years, but it depends on the number of jumps and time spent not in stand-by mode. If you're planning not to use the unit for some time (like during Wintertime, for example) we suggest to remove the battery to save battery life. Replace the battery when the low-battery indicator turns on (please note that extreme cold weather may falsely activate this indicator!). If the low-battery signal turns on at temperatures above 50°F (10°C) the battery needs immediate replacement.

To install or replace the battery follow these steps:

1. Remove the battery compartment cover by untightening the two screws. Be careful not to lose the gasket in the battery compartment and the cover.
2. Discard the old battery, if present: hold a button depressed few seconds to be sure the unit is totally discharged. Install the new battery following the drawing, checking you're following the correct polarity.
3. Close the battery compartment cover tightening the two screws, assuring that the gasket is correctly in place.



*Battery installation should be made with extra care. The operator is responsible for installing the battery properly behind the battery compartment cover. Correct placement of the gasket guarantees water resistance of the unit. All of the information stored in the **AloXs** is kept in memory when replacing the battery. Remember to activate the unit by clicking a button after replacing the battery!*

CONFIGURING THE ALOXS

The AloXs is highly adaptable to your own personal habits. Your settings will be stored and recalled also when you replace the battery. When you first get the unit we recommend to go through the following steps:

SET DATE AND TIME

The unit immediately displays this screen when you install the battery and activate the unit. Time and date are displayed in stand-by mode too. The display will show first the preferred date format to be used (“31-12” means dates as “day-month-year”, while “12-31” means “month-day-year”).

Selection can be changed by clicking the UP or DOWN button. Clicking the SELECT button will proceed to the date set screen.



Configure date format

6



Configure date and time

According to your choice of date display, you will be able to set in sequence day (or month), month (or day), year, hours and minutes. Use the UP or DOWN button to change values, click SELECT to proceed to the next value to set. Holding down the UP or DOWN key will change values rapidly. Hours are shown in 24 hours format only (no AM/PM setting available).

MEASUREMENT UNITS

Units used can also be customized easily. From the main screen click SELECT and then DOWN to go to the configuration screen, and click SELECT until the desired units configuration screen appears. Choose the units you prefer for time and date format, speed and altitude, meters or feet, kilometers or miles per hour.



Configure altitude units

7



Configure speed units

BREAKOFF ALTITUDE

You can set a breakoff altitude so that the **AloXs** will blink some of the icons when passing that altitude in freefall. It will also be used to set the altitude where the unit will switch from speedometer to altimeter mode (see below).



Set breakoff altitude



Altitude display below breakoff altitude (ALTI and arrows blink)



Configure altitude display resolution

DISPLAY RESOLUTION

When displaying the altitude in freefall, the **AloXs** will update the display at fixed altitude intervals. At higher freefall speeds it may be preferred to choose a resolution value allowing a less frequent change of display of the freefall altitude. Choose your preferred setting in the configuration function. The available choices will be shown using the chosen measurement units.

Main function

The **AloXs** can be configured to work in freefall as a digital altimeter or speedometer.



Set main function (speed units set in MPH or KMH)

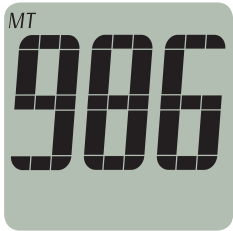


ALTIMETER VIEW

Altimeter view changes depending on the unit of measure set.

METRIC

When unit of measure is metric, the display will show the full altitude up to 1.000 meters. Above 1.000 it will show tens of meters, where a point will separate thousands of meters from hundreds of meters.



Altimeter view, below 1.000 meters



Altimeter view, above 1.000 meters

FEET

When unit of measure is feet, altitudes up to 1.000 feet will be fully displayed. Altitudes higher than 1000 feet but below 10,000 feet will be shown in tens of feet, where a point will separate thousands of feet from hundreds of feet. Above 10.000 feet the unit will show altitudes in hundreds of feet, where a point will separate thousands of feet from hundreds of feet.



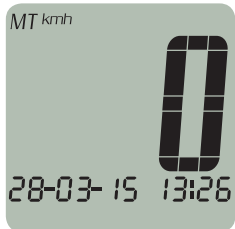
Altimeter view, between 1,000 feet and 10,000 feet



Altimeter view, above 10,000 feet

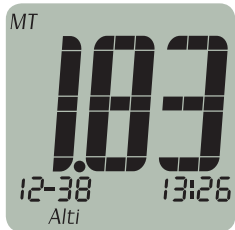
SPEEDOMETER VIEW

Speeds can be displayed in Kilometres per hour (KMH) or miles per hour (MPH). While in freefall the display will show the speed until the breakoff altitude set is reached or after opening the canopy, when the display will automatically go back to altimeter view. If a breakoff altitude hasn't been set, the speedometer view will switch to altimeter at the factory set altitude of 1000 meters (3500 feet).



Ground mode, speedometer set, KMH units

While on the ground, when the unit is set as speedometer it will also show speed units on the display.



INFLIGHT VIEW

During the climb to altitude the **AloXs** shows the current altitude, the current time and the time elapsed from takeoff.

Inflight mode

LOGBOOK

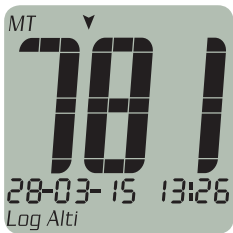
The **AloXs** senses the different phases of your skydive by the changes of air pressure and tracks that information in its electronic logbook. The logbook can store up to 300 jumps, and can be reset at any time. The jump counter can also be personalized to match your current number of jumps (see totals below). To show the logbook hold the UP button depressed until the logbook screen shows. The unit shows briefly the number of jumps stored, then the number of the last jump displayed. By clicking the SELECT button you can go thru the information stored for that jump. You can browse the jumps stored in logbook by clicking the buttons UP or DOWN.



Number of jump (date and time of jump at the bottom)



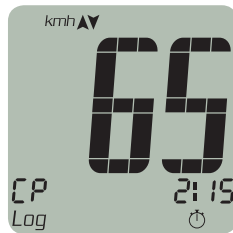
Exit altitude



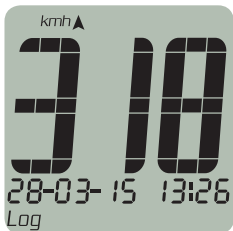
Pull altitude



Freefall time



Time (minutes and seconds) and average speed (large numbers, in the units chosen) under the open canopy



Maximum freefall speed



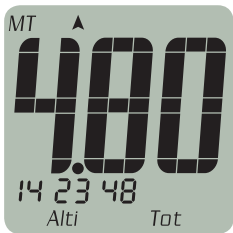
Average freefall speed

Totals

While logging jump information, your **AloXs** tracks statistics, like your total freefall time, in addition to your total jumps. To view your totals hold the DOWN button depressed until the TOTALS screen shows, then click SELECT to display in sequence the maximum exit altitude, the lowest deployment altitude and the maximum freefall speed.



Number of jumps totaled (total freefall time as hours, minutes, seconds at the bottom)



Highest exit altitude



Lowest pull altitude



Highest freefall speed



Log configuration

When you first set up your unit, you can enter your current freefall time and the AloXs will continue calculating your freefall time from that point. This function also resets both jumps log and totals accumulated. Just go to the totals screen, and hold the DOWN button until the log configuration screen appears. You can set your total freefall time in hours, minutes, and seconds and the number of jump the AloXs will use to enumerate your jumps. Use UP and DOWN to change values, SELECT to move to the next number. It will be possible to set in sequence the total freefall time in hours, minutes, and seconds, then the hundreds and the units of the next jump number (the first that will be used in the jump log). Reset logbook by holding the SELECT button, or let the unit go back to normal mode after few seconds if you don't want to reset the logbook.



Watch display

USE AS A WATCH

When in stand-by mode the AloXs will show current date and time, so you can use it as a wrist watch.



Reset ground reference (ALTI and arrows blink)

SETTING A GROUND REFERENCE MANUALLY

While being able to follow pressure changes automatically, in some particular situations the **AloXs** may need to be reset to ground level manually. **DO NOT USE THESE FUNCTIONS IF YOU'RE NOT ON THE GROUND!**

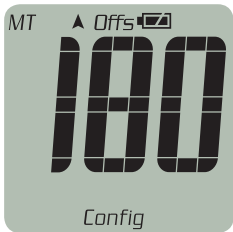
Manual reset can be done in two ways:

- The **AloXs** shows the inflight screen while on the ground: go to configuration screen, click SELECT until the ground reset screen shows. At this point press and hold UP and DOWN buttons until the unit beeps and shows the ground mode screen.

- The **AloXs** shows the canopy screen while on the ground: click repeatedly the DOWN button until the unit shows the ground mode screen.

OFFSET FUNCTION

When the place where you land is at a known altitude different from the place where you take off, you can set an altitude offset to correct the ground reference of the landing zone. Click SELECT and then DOWN button to enter in the CONFIG function. Click SELECT until the offset setting screen shows. You can set the altitude difference of the landing zone referred to the take off place. The up arrow indicates that the landing zone is at a higher altitude, while the down arrow indicates that the landing zone is below the take off place. The offset can be set with 10 meters or 25 feet increments.



Configure offset altitude



Ground mode with an offset set as landing zone at +250 m from take off place

When an offset is set, the OFFSET indicator will blink when in ground mode, showing the altitude difference of the landing zone and the direction (higher or lower).

CHECKING THE BATTERY

Double click SELECT and the display will first show the temperature in Celsius degrees, together with software version and serial number at the bottom. It will then show the current battery voltage in Volts. Remember to replace the battery when the units shows battery low indication, or earlier. Note: temperature reading is indicative and may be influenced by other factors like body temperature.



Temperature



Battery voltage

WATER RESISTANCE

The **AloXs** provides water protection when swooping into ponds or in case of an unintentional water jump. If the unit gets wet, wipe it with a clean tissue, remove the battery, put it in a dry place away from sunlight, and let all parts dry out before using it again.

UNIT CARE

Operate on the unit only as described in this manual. Do not try to perform any other service to the **AloXs** or attempt to open the case. Protect your unit from shocks, extreme heat and cold, and prolonged exposure to direct sunlight. If not in use, your **AloXs** should be stored in a clean, dry environment at room temperature. The **AloXs** can be cleaned with a clean cloth lightly moistened with warm water, do not use soap or detergents. Do not attempt to take the **AloXs** apart or service it by yourself.

TECHNICAL SPECIFICATIONS

- Microprocessor based skydiving altimeter
- Wide size custom shaped digits for immediate readings
- Intuitive user interface
- Real time altitude or speed indicator
- Altitude range: 0..30,000 ft (0..10.000 meters)
- Water resistant
- Self-calibration, self test, no power-on, low consumption
- Easily programmable on the ground or while climbing to altitude
- Jumps log (up to 300 jumps): date, time, exit altitude, pull altitude, freefall time, maximum freefall speed , average freefall speed, canopy air time, maximum speed under the open canopy
- Statistics: number of jumps, maximum exit altitude, lowest deployment altitude, maximum freefall speed
- Battery: 1 x CR2032
- Size: 51 x 39 x 10 mm

WARRANTY AND LIMITS OF LIABILITY

If the products should fail due to defects in manufacturing, Parasport Italia will repair or replace the units or parts of it free of charge for three (3) years from the date of purchase. This warranty applies to the original purchaser and covers only failures due to defects in materials and workmanship that may occur during normal operations while in the period of the warranty. It doesn't cover damage or failures resulting in accident, misuse, neglect, mishandling, alteration, or modifications of the product, or any failure caused by operation of the product outside the scope of its specifications or any cause not covered by this warranty.

WARNING!

This product has been designed for skydiving and is not approved by the manufacturer for any other activity. Skydiving is a dangerous sport where unavoidable risks may result in serious bodily injury or death, personal and of third parties, even when properly using well made products. By using this product the User accepts full responsibility and implies knowledge that he/she is subject to injuries, losses or death that may occur through proper or improper use of this product, good or defective. By using this product, user waives any liability of Parasport Italia and its dealers for personal injuries or other damages arising from such use.

INDEX

Introduction	3	Speedometer view	12
Buttons	3	Inflight view	12
Icons	3	Logbook	13-14
Installing the battery	4-5	Totals	15-16-17
Configuring the AloXs	6	Use as a watch	18
Set date and time	6-7	Setting a ground reference manually	18-19
Measurements units	7	OFFSET function	19-20
Breakoff altitude	8	Checking the battery	20
Display resolution	9	Water resistance	21
Main function	9	Unit care	21
Altimeter view	10-11	Technical specifications	22
		Warranty and limits of liability	22



PARASPORT
S K Y D I V I N G

www.parasport.it